

Job Name/Location:

Tag #:

Date:

For:	File	Resubmit
	Approval	Other_____

PO No.:

Architect: _____ GC: _____

Engr: _____ Mech: _____

Rep: _____
(Company) (Project Manager)



LC428HV

Single Zone 3x3 Four-Way Ceiling Cassette

Outdoor Unit (ODU) - LUU429HV, Indoor Unit (IDU) - LCN428HV

Performance:

Cooling:

Cooling Capacity (Min~Rated~Max) (Btu/h)	16,800 ~ 42,000 ~ 48,700
SEER	17.8
EER	10.32

SEER - Seasonal Energy Efficiency Ratio EER - Energy Efficiency Ratio

Heating:

Heating Capacity (Min~Rated~Max) (Btu/h)	18,800 ~ 47,000 ~ 49,800
HSPF	9
Max. Heating @ Indoor 70°F DB	
Outdoor 17°F DB	41,500
Outdoor 5°F DB	40,000
Outdoor -4°F DB	38,230

HSPF - Heating Seasonal Performance Factor

Electrical:

Power Supply (V/Hz/Ø)	208-230/60/1
MOP (A)	40
MCA (A)	32
Cooling Rated Amps (A)	26.3
Heating Rated Amps (A)	26.3
Compressor (A)	22.0
Fan Motor (IDU + ODU) (A)	1.1 + 1.6 x 2
Cooling Power Input (kW)	4.07
Heating Power Input (kW)	4.09

MOP - Maximum Overcurrent Protection MCA - Minimum Circuit Ampacity

Piping:

Liquid (in., O.D.)	3/8
Vapor (in., O.D.)	5/8
Additional Refrigerant (oz./ft.)	0.43
Min. / Max. Pipe Length (ft.) ²	6.6 / 246
Piping Length (no add'l refriger., ft.)	24.6
Max. Elevation (ft.)	98.4

Features:

- Inverter (Variable Speed Compressor)
- Internal Condensate Pump
- Swirl Wind
- Jet Cool
- Auto Restart
- Auto Changeover
- Ultra-quiet Turbo Fan
- Night Quiet Operation
- Optional Wi-Fi Control

Included Accessories:

- Wireless Remote Controller - PQWRHQ0FDB

Required Accessories:

- Grille Kit - PT-MCHWO

Optional Accessories:

- | | | |
|---|--|--|
| <input type="checkbox"/> Simple Controller - PREMT000 | <input type="checkbox"/> ACP 5 BACnet Gateway - PACP5A000 | <input type="checkbox"/> RS3 Remote Controller - PREMTB100 |
| <input type="checkbox"/> Premium Controller - PREMTA000 | <input type="checkbox"/> Ventilation Kit + Flange ³ - PTVK410 + PTVK420 | <input type="checkbox"/> Aux Heater Relay Kit - PRARHO |
| <input type="checkbox"/> MultiSITE™ CRC1 - PREMTBVC0 | <input type="checkbox"/> Flange - PTVK430 | |
| <input type="checkbox"/> MultiSITE CRC1+ - PREMTBVC1 | <input type="checkbox"/> Auto Elevation Kit - PTEGMO | |
| <input type="checkbox"/> MultiSITE Comm. Mgr. - PBACNBTR0A | <input type="checkbox"/> Wi-Fi Module - PWFMD200 | |
| <input type="checkbox"/> PI-485 - PMNFP14A1 | <input type="checkbox"/> Base Pan Heater - PQSH1200 | |
| <input type="checkbox"/> Dry Contact - PDRYCB300 | <input type="checkbox"/> Low Ambient Kit (Cooling operation to -40°F) | |
| <input type="checkbox"/> LonWorks® Gateway - PLNWKB100 | <input type="checkbox"/> -PAG-HS4/PAG-HS5/PQCA0 | |
| <input type="checkbox"/> AC Smart 5 BACnet® Gateway - PACS5A000 | <input type="checkbox"/> Without PQCA0 (Baffles only) Cooling to -4°F | |

Operating Range:

Outdoor Unit:

Cooling (°F DB)	5 ~ 118
Heating (°F WB)	-4 ~ +64

Indoor Unit:

Cooling (°F WB)	57 ~ 77
Heating (°F DB)	59 ~ 81

System Data:

Refrigerant Type	R410A
Refrigerant Control	EEV
Refrigerant Charge (lbs.)	7.5
IDU Sound Pressure (H/M/L) (±1 dB[A]) ³	47 / 44 / 41
ODU Sound Pressure (Cooling / Heating) (±1 dB[A]) ³	52 / 54
ODU Net / Shipping Weight (lbs.)	198.9 / 223.1
IDU Net / Shipping Weight (lbs.)	54.2 / 68.3
Grille Net / Shipping Weight (lbs.)	14 / 21
Heat Exchanger Coating	GoldFin™

Fan:

ODU Type	Propeller
IDU Type	Cross Flow
Fan Speeds (Fan/Cool/Heat)	4 / 5 / 4
Quantity (ODU + IDU)	2 + 1
Motor/Drive	Brushless Digitally Controlled/Direct
ODU Air Flow Rate (CFM)	3,884
IDU Air Flow (CFM H/M/L)	1,165 / 989 / 777
Dehumidification (pts./hr.)	10.1

Notes:

1. Acceptable operating voltage: 187V-253V.
2. Piping lengths are equivalent.
3. Must comply with applicable codes for fire isolation dampers.
4. Sound Pressure levels are tested in an anechoic chamber under ISO Standard 3745.
5. All communication / connection (power) cable from the outdoor unit to the indoor unit is field supplied and must be a minimum of four-conductor, 14 AWG, stranded, shielded or unshielded (if shielded, it must be grounded to the chassis of the outdoor unit only), and must comply with applicable local and national codes.
6. This unit comes with a dry helium charge.
7. This data is rated 0 ft. above sea level, with 24.6 ft. of refrigerant line and a 0 ft. level difference between outdoor and indoor units.
8. Power wiring cable size must comply with the applicable local and national code.
9. Must follow installation instructions in the applicable LG installation manual.

BACnet® is a registered trademark of ASHRAE. LonWorks® is a trademark of Echelon Corporation.



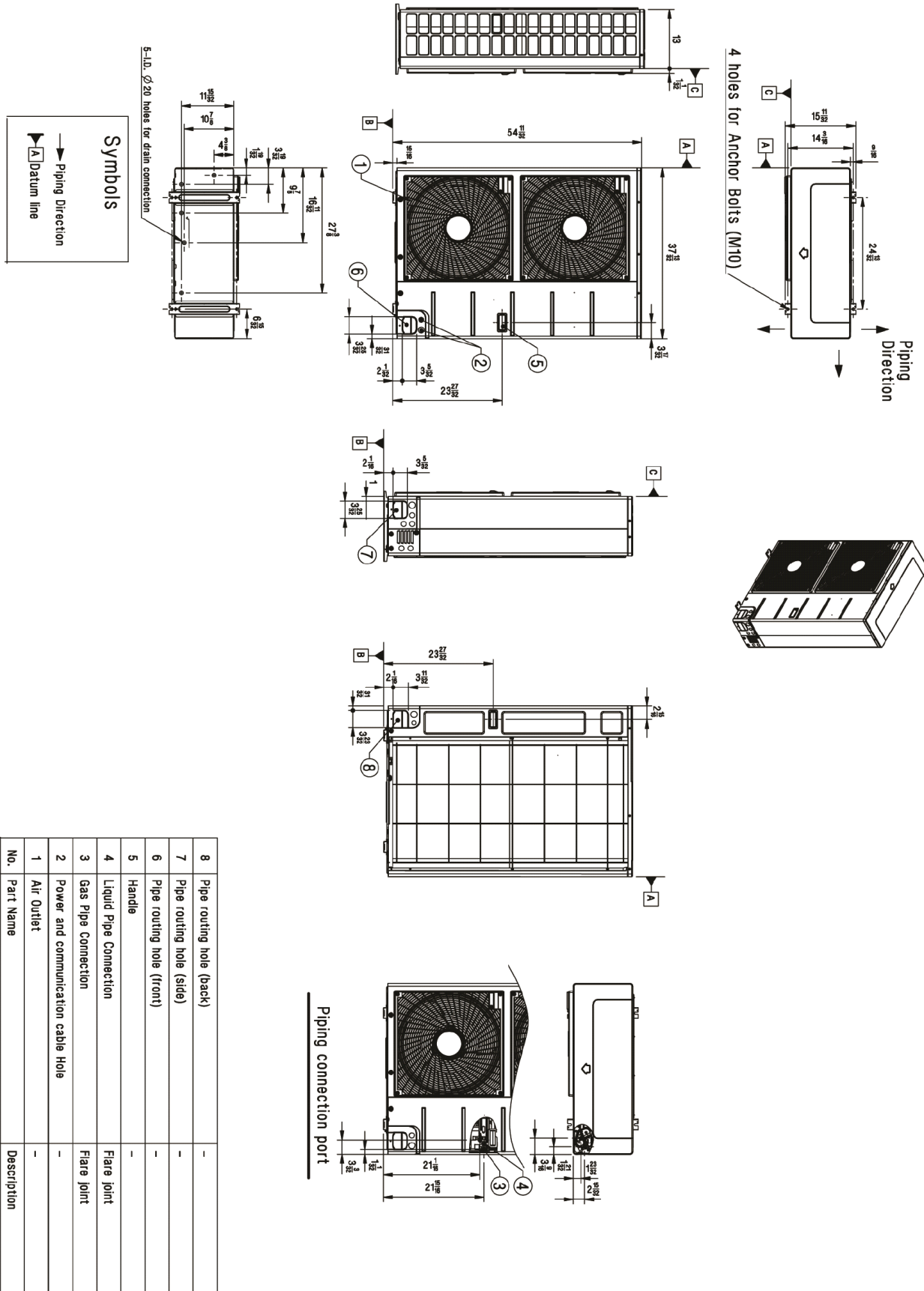
LC428HV
 Single Zone 3x3 Four-Way Ceiling Cassette
 Outdoor Unit (ODU) - LUU429HV, Indoor Unit (IDU) - LCN428HV



Tag No.: _____

Date: _____

PO No.: _____



No.	Part Name	Description
8	Pipe routing hole (back)	-
7	Pipe routing hole (side)	-
6	Pipe routing hole (front)	-
5	Handle	-
4	Liquid Pipe Connection	Flare joint
3	Gas Pipe Connection	Flare joint
2	Power and communication cable Hole	-
1	Air Outlet	-

LC428HV

Single Zone 3x3 Four-Way Ceiling Cassette

Outdoor Unit (ODU) - LUU429HV, Indoor Unit (IDU) - LCN428HV



Tag No.: _____

Date: _____

PO No.: _____

